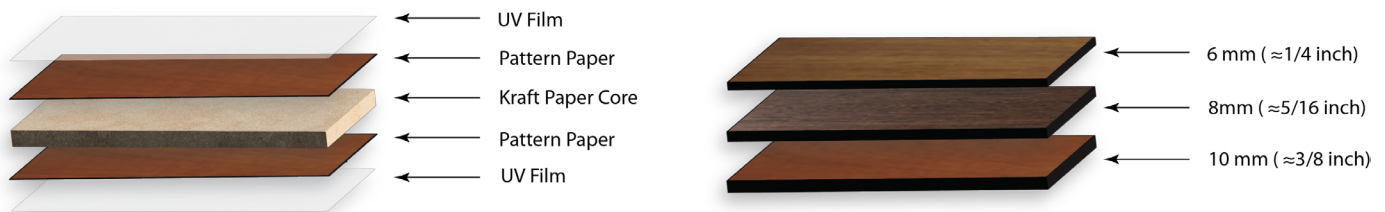


TEST	STANDARD	PROPERTY OR ATTRIBUTE	MEASURE UNIT	RESULTS
1. PHYSICAL PROPERTIES				
Bond Strength	ASTM C297	Strength of Failure \geq 10	psi	Control: > 199 Freeze Thaw: > 265 UV Exposure: > 309
Flexural Strength	ASTM D1037	Average Strength \geq 60% of Control Control FIT: 500 Control FIC: 499	psi	Wet FIT: 593 (18.6%) Wet FIC: 602 (20.6%) Freeze Thaw FIT: 511 (2.2%) Freeze Thaw FIC: 498 (0.2%)
Freeze-Thaw Cycling	ICC-ES AC92 Section 3.2.2 & 4.2.1	Appearance/ Performance		No change
Water Resistance	ASTM D2247	Appearance/ Performance		No change
Resistance to Fixings	ASTM 1037	Pull-Through Resistance Safety Factor of "3" if all requirements are met	lbs	1,320 3: 440
2. WEATHER RESISTANCE REQUIREMENTS				
Accelerated Weathering	ICC-ES AC92 Section 3.2.1 & 4.2.1	Appearance/ Performance		No change
Salt Spray Exposure	ASTM B117 (300h)	Appearance/ Performance		No change
3. SAFETY REQUIREMENTS				
Material Surface Burning Characteristics	ASTM E84	Classification Flame Spread Index Smoke Developed Index	Class FSI SDI	B 26-75 0-450
Self-Ignition	ASTM D1929	Temperature \geq 343°C	°C	490
4. COMPOSITION AND THICKNESS				

The interior and exterior skin is constructed from a 0.006" thick layer of high pressure laminate. The core is constructed from 0.300" thick Kraft paper impregnated with meamine resin.



Disclaimer: The technical data sheet for ALFA® panels is provided for informational purposes only. The information contained in this document is based on our current knowledge and is subject to change without notice. The data provided is believed to be accurate and reliable, but no warranty, express or implied, is made regarding its accuracy, completeness, or suitability for any particular purpose. The user assumes all risks and liabilities in connection with the use of this information. It is the responsibility of the user to determine the suitability of the product for their specific application and to comply with all applicable laws and regulations. The manufacturer shall not be liable for any damage, loss, or injury arising from the use or inability to use this product. This document does not constitute a warranty or guarantee, whether expressed or implied, including without limitation, any warranty of merchantability, fitness for a particular purpose or non-infringement of third party rights.



ALFA®

Architectural Accent Panels

Color Guide



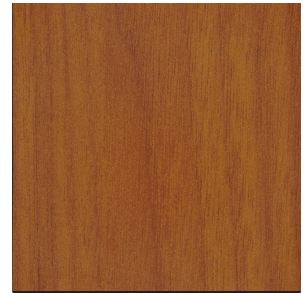
7080P | Stone



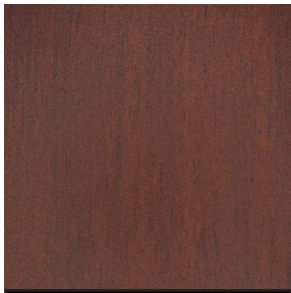
7081P | Dark Stone



7082P | Dark Stone II



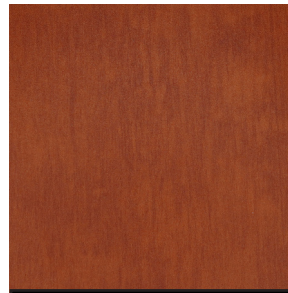
8825 | Oak



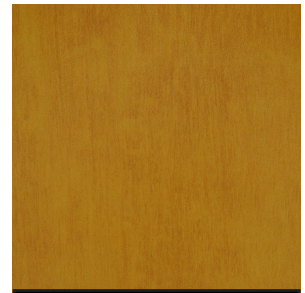
8826 | Red Oak



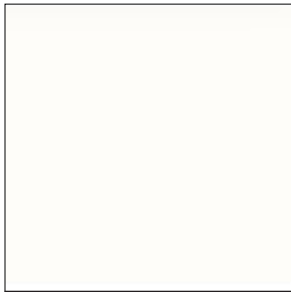
8827 | Brown Oak



8828 | Cherry Oak



8829 | Yellow Oak



0020A | White



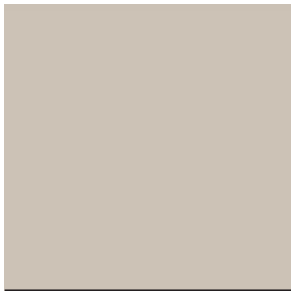
9901 | Yellow



9902 | Pastel Green



9933 | Dark Green



9931 | Beige



9903 | Sky Blue



9904 | Pastel Blue



9932 | Navy

